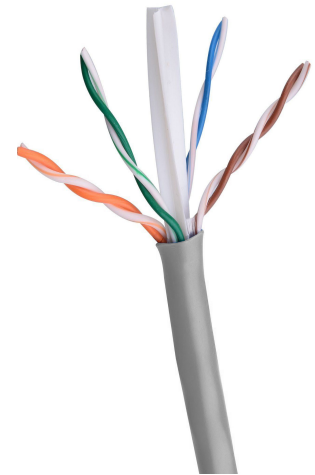
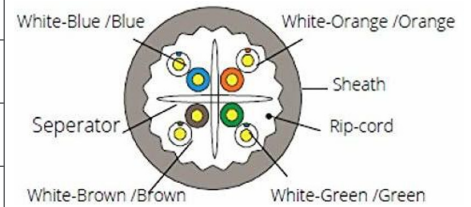


Category 6A Unshielded Twisted Pair (UTP) cable consists of PVC/LSZH insulated 8*23 AWG Solid Bare Electrolytic Grade Copper conductors twisted as 4 Pairs. These structured cable suitable to support 10/100/1000 Base-T, 10GBase-T Standard.

FEATURES

High-Speed 10G Performance - 23 AWG Solid Bare Copper Conductors - 4-Pair Twisted Design
 Durable & Compliant Sheath - Reliable Electrical Performance

TECHNICAL SPECIFICATIONS	
Category	U/UTP CAT6A-4P-PVC
Test Standard	ISO/IEC11801 TIA-568-C.2 YD/T1019
Insulation	Material HDPE
Sheath	External O.D. 7.1±0.4 mm
	Material PVC (complies RoHS)
	Color Grey RAL7035
Packing	Wooden Tray & Carton
Packing length	(305±1.5)m
Rip-cord	Yes Drain wire TC0.45mm
Electrical Characteristics (20°C)	1.0-250.0MHz Impedance (Ω) 100±15
	1.0-250.0MHz Delay Skew (ns/100m) ≤45
	DC Resistance (Ω/100m) max 9.5
	DC Conductor Resistance Unbalance (%) max 5.0



PART CODE	DESCRIPTION
VC-6A-U-L23-GY	DHRUVAConnect, Vega Category 6A, UTP Cable Solid 23 AWG LSZH 305 meter, Grey Color
VC-6A-U-P23-GY	DHRUVAConnect, Vega Category 6A, UTP Cable Solid 23 AWG PVC 305 meter, Grey Color



ADVANCED FIBER SOLUTIONS

#32, Kadagrahara Village, Gundur Main Road, Bidarahalli Hobli, Bengaluru-560049
Helpline: +91 63628 42419 / 7676041473. Email: sales@dhruvaconnect.com.

