

DHRUVA Connect Vega UTP Unloaded Patch Panel refers to the modular design with 24/48 empty ports in 1U, that enable to install Keystone Jacks. Same patch panel enables several types of cables to be connected both in straight and angled type, designed to accommodate Category 6, Category 6A Keystone Jacks. These panels are accompanied with smart cable manager to secure the distribution of horizontal cables

FEATURES

- Individually number ports.
- Integrated Smart Cable Manager offers a secured, Horizontal Cable distribution without any cable tie or velcro
- Angled Patch Panel will eliminate the need for Horizontal Cable Manger, their by allowing for high density patching
- Mounts in standard 19-inch racks.

TECHNICAL SPECIFICATIONS	
Snap-in	Cat.6/Cat.6A Keystone Jack
Type of Patch panel	straight, Angled
No. of Port	24 Port /48 Port
No. of Rack space	1U/2U
Punching Dependability	750times
Colour	Black
Width	19"

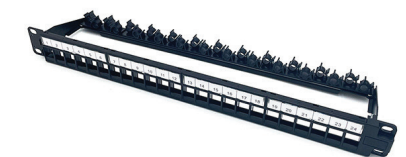
PART CODE	DESCRIPTION
V-PP-UA00-U-24-1C	DHRUVAConnect Vega UTP Unloaded, Patch Panel, 1U, Angled 24 Port with Smart Cable Manager
V-PP-UA00-U-48-02	DHRUVAConnect Vega UTP Unloaded, Patch Panel, 2U, Angled 48 Port with Back Bar
V-PP-US00-U-24-01	DHRUVAConnect Vega UTP Unloaded, Patch Panel, 1U, Straight 24 Port with Back Bar
V-PP-US00-U-24-1C	DHRUVAConnect Vega - UTP Unloaded, Patch Panel, 1U, Straight 24 Port with Smart Cable Manager
V-PP-US00-U-48-01	DHRUVAConnect Vega UTP Unloaded, Patch Panel, 1U, Straight 48 Port with Back Bar



FTP 1U Empty Patch Panel 24Port Angled with Smart Cable Manager



FTP Blank Patch Panel 24 Port with Back Bar



UTP Empty 1U Patch Panel 24Port With Smart Back Bar Folded Type



ADVANCED FIBER SOLUTIONS

#32, Kadagrahara Village, Gundur Main Road, Bidarahalli Hobli, Bengaluru-560049
Helpline: +91 63628 42419 / 7676041473. Email: sales@dhruvaconnect.com.

